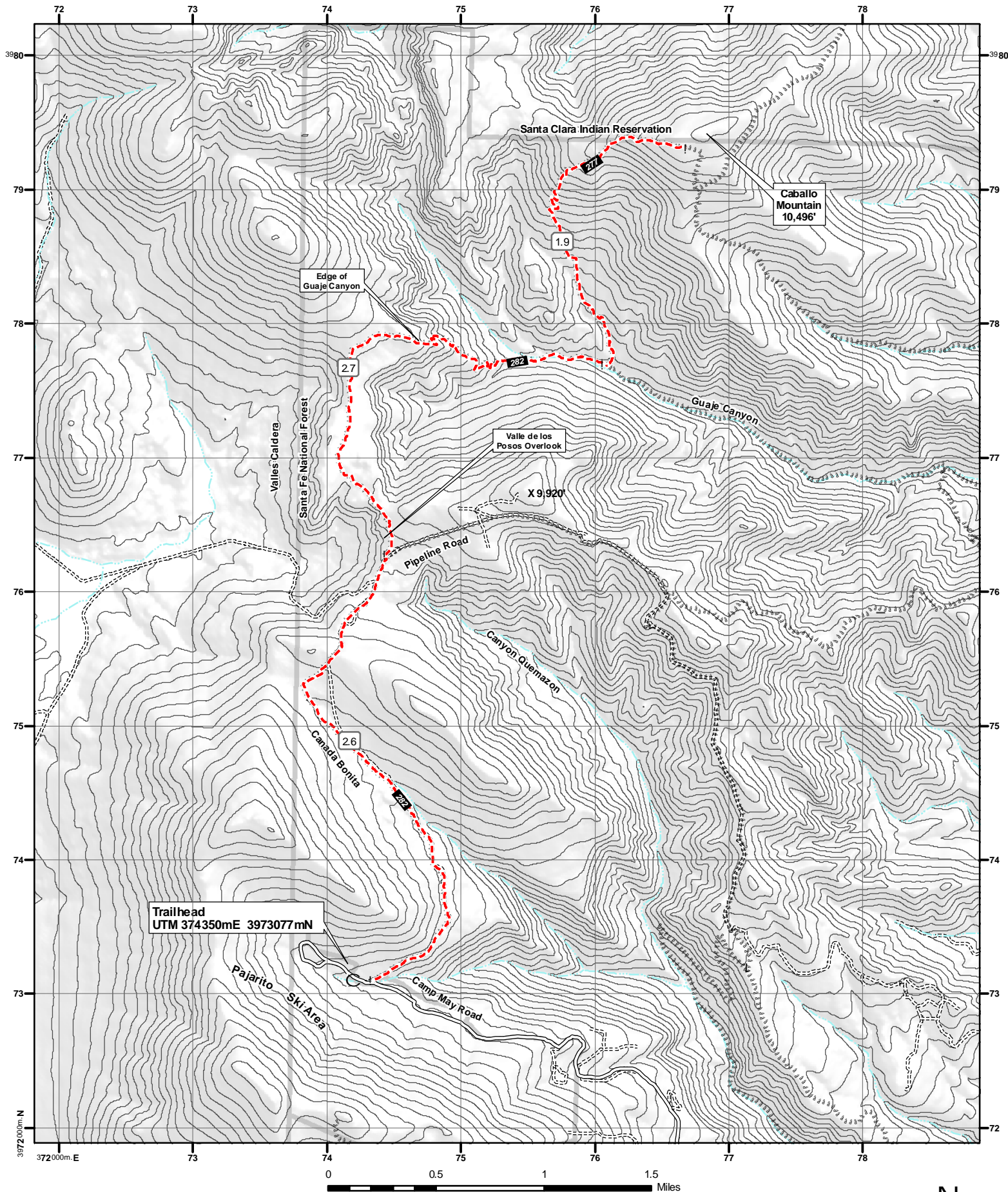


# 34 Caballo Peak



- Primary Trail - - - - -
- Other Trails - - - - -
- Mileage 0.5

CONTOUR INTERVAL 80 FEET

More detailed hike descriptions and access information available in "Day Hikes in the Santa Fe Area" - Sierra Club  
 Map Created by Travel Bug 839 Paseo de Peralta, Santa Fe, NM 87501 505-992-0418 Maps Guides Espresso!



UTM 13 S NAD 1927  
 1000 Meter Grid